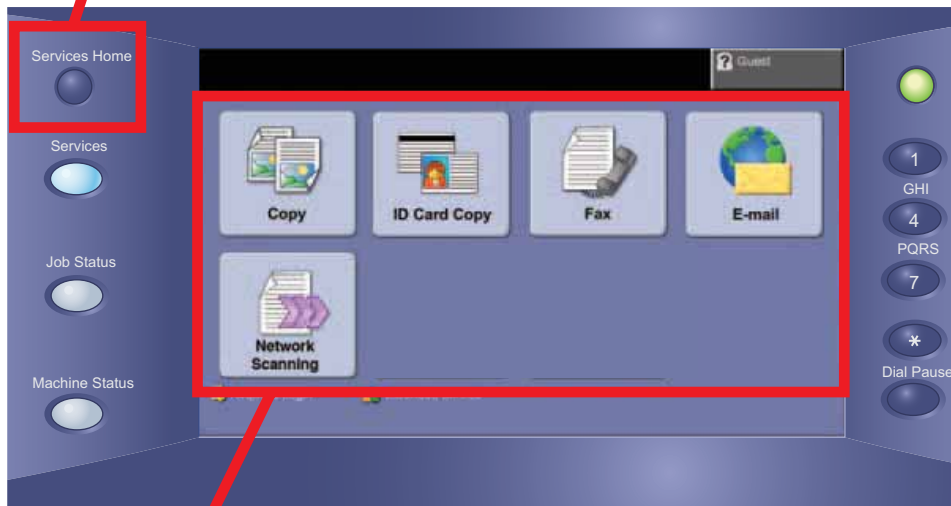


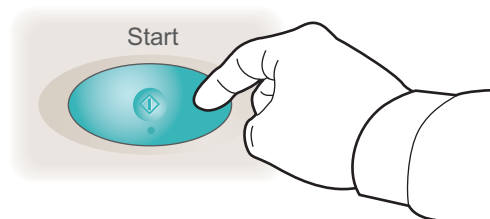
# Touch Screen Navigation

1. Press Services Home



2. Select function, then desired options on screen

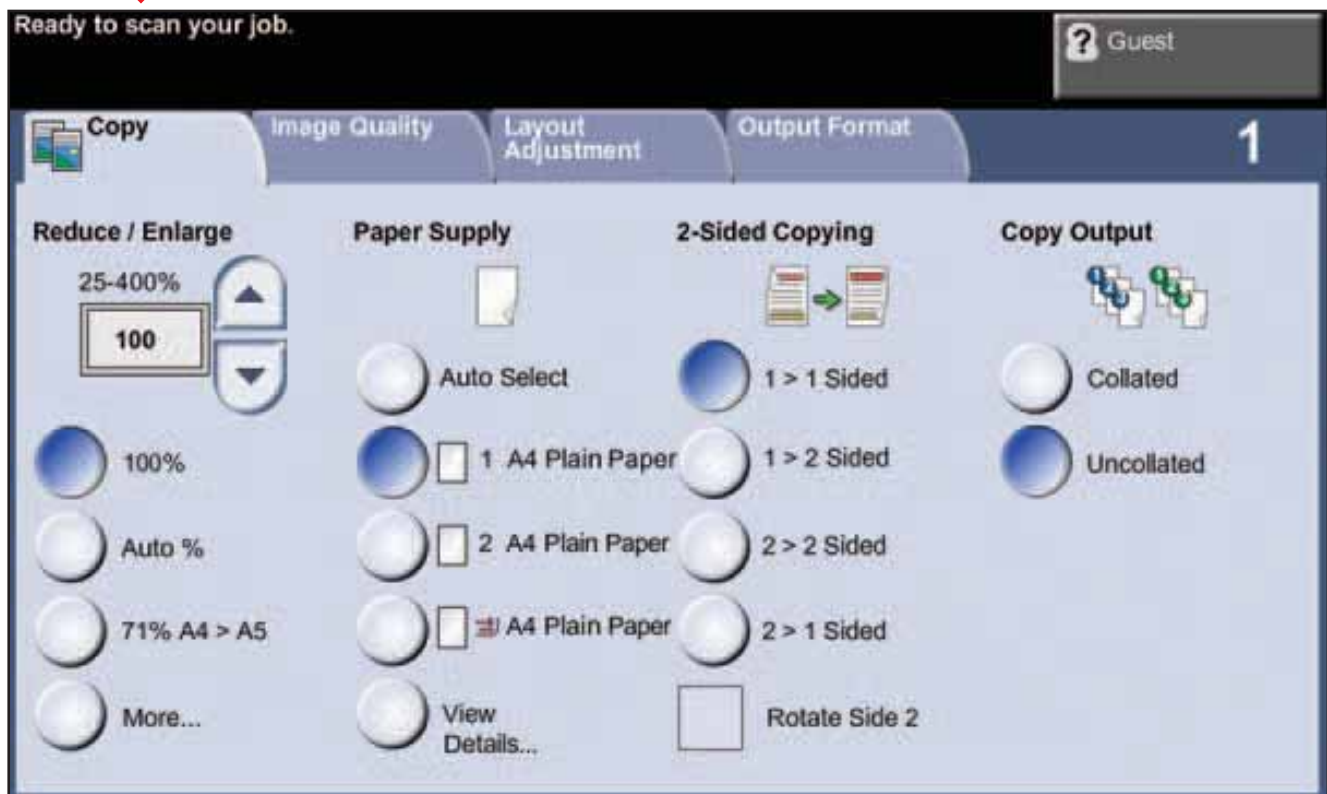
3. Press Start



# The Copy Screen On Xerox 3635

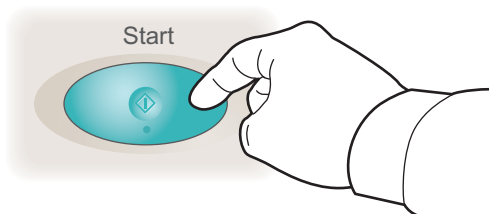


## Copy



- Place originals face up in the document feeder, or face down on the glass.
- Verify defaults (shown above) or change as desired. Select the number of copies with the numeric keypad.

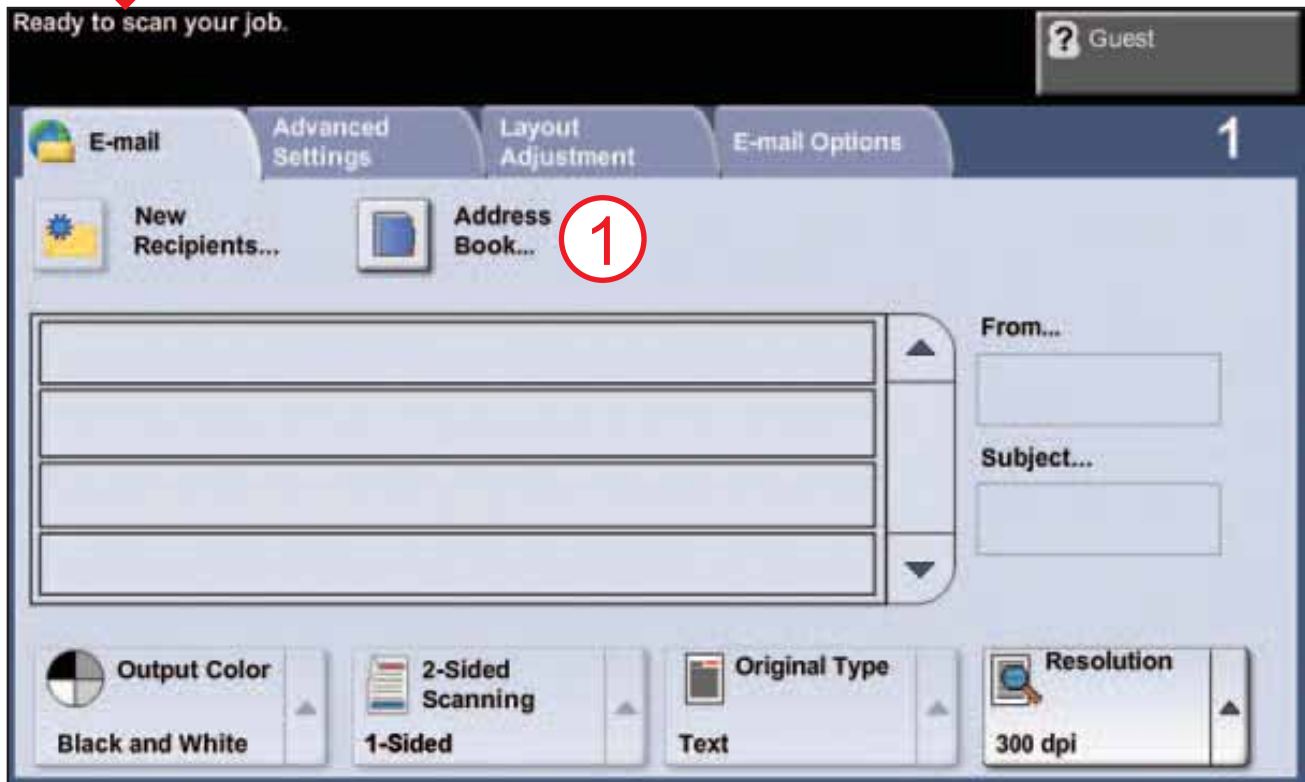
Press Start



# Scan-To-Email on Xerox 3635



## E-mail



- Place originals face up in the document feeder, or face down on the glass.
- Choose ADDRESS BOOK.
- Type the first few (minimum of 3) letters of your name and [SEARCH].
- Find your name in the list and choose [TO], this will add your name to the right side. Hit OK
- Change the necessary settings as so desired.

Press Start

